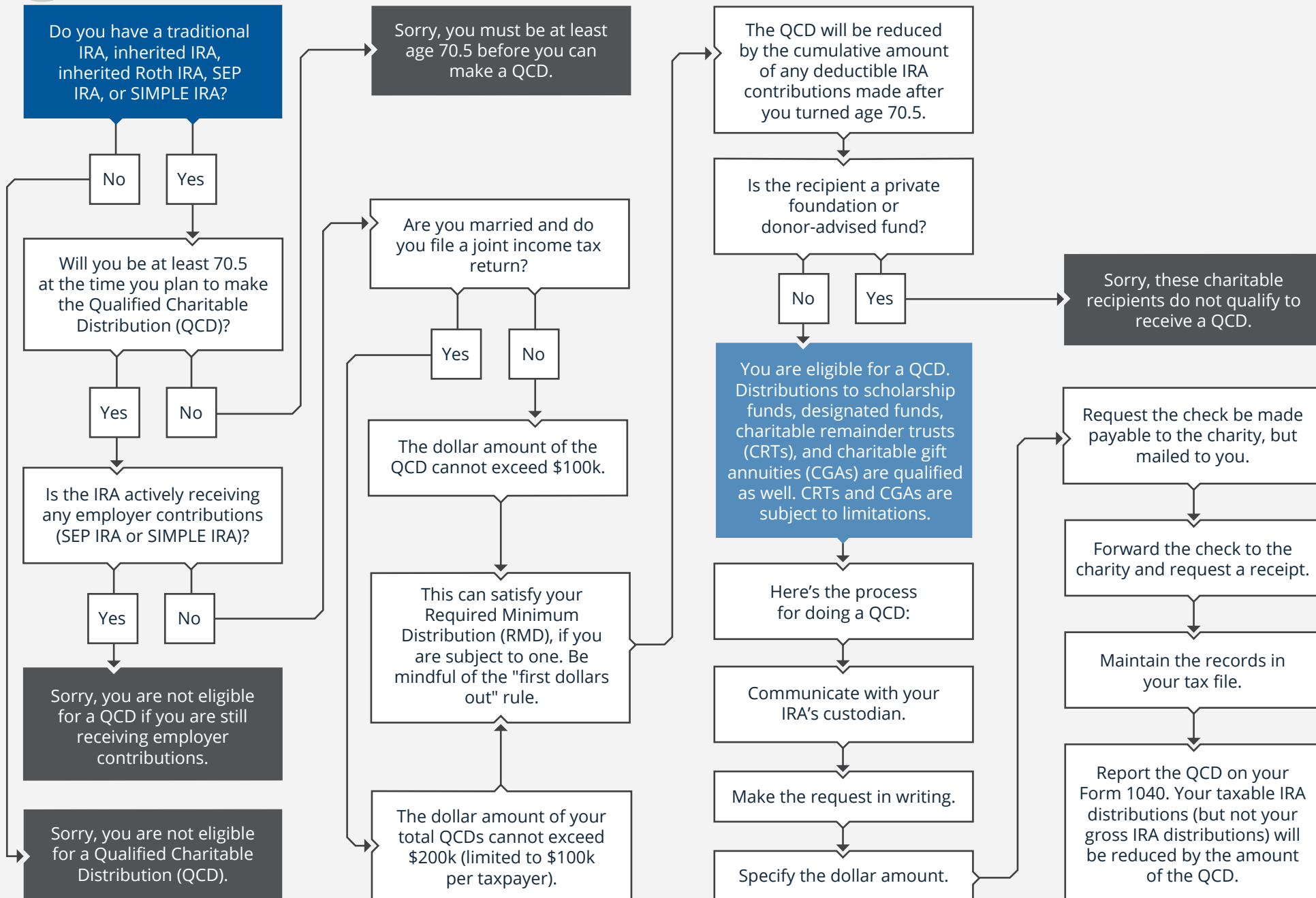




## Start Here





## Ready to make a Qualified Charitable Distribution? Reach out to our team by scanning the QR code or call 717-334-5451

The material presented includes information and opinions provided by a party not related to Thrivent Advisor Network. It has been obtained from sources deemed reliable; but no independent verification has been made, nor is its accuracy or completeness guaranteed. The opinions expressed may not necessarily represent those of Thrivent Advisor Network or its affiliates. They are provided solely for information purposes and are not to be construed as solicitations or offers to buy or sell any products, securities, or services. They also do not include all fees or expenses that may be incurred by investing in specific products. Past performance is no guarantee of future results. Investments will fluctuate and when redeemed may be worth more or less than when originally invested. You cannot invest directly in an index. The opinions expressed are subject to change as subsequent conditions vary. Thrivent Advisor Network and its affiliates accept no liability for loss or damage of any kind arising from the use of this information. Investment advisory services are offered through Thrivent Advisor Network, LLC, a registered investment adviser. This material, in and of itself, does not create an investment advisory relationship subject to the Investment Advisers Act of 1940.

The purpose of the report is to illustrate how accepted financial and estate planning principles may improve your current situation. The term "plan" or "planning," when used within this report, does not imply that a recommendation has been made to implement one or more financial plans or make a particular investment. You should use this Report to help you focus on the factors that are most important to you. Review the Financial Planning Disclosure Document and the Financial Planning Agreement for a full description of the services offered and fees.

Investment advisory services offered through Thrivent Advisor Network, LLC., (herein referred to as "Thrivent"), a registered investment adviser. Clients will separately engage an unaffiliated broker-dealer or custodian to safeguard their investment advisory assets. Review the Thrivent Advisor Network Client Relationship Summary, Financial Planning and Consulting Services, Investment Management Services (Non-Wrap) and Wrap-Fee Program brochures for a full description of services, fees and expenses, available at [Thriventadvisornetwork.com](http://Thriventadvisornetwork.com). Thrivent Advisor Network, LLC's Advisory Persons may also be registered representatives of a broker-dealer to offer securities products.

Advisory Persons of Thrivent provide advisory services under a "doing business as" name or may have their own legal business entities. However, advisory services are engaged exclusively through Thrivent Advisor Network, LLC, a registered investment adviser. Advent Partners and Thrivent Advisor Network, LLC are not affiliated companies. Information in this message is for the intended recipient[s] only. Please visit our website [www.adventpartnersfp.com](http://www.adventpartnersfp.com) for important disclosures. Securities offered through Purshe Kaplan Sterling Investments ("PKS"), Member FINRA/SIPC. PKS is headquartered at 80 State Street, Albany, NY 12207. PKS and Advent Partners are not affiliated companies.

NOTICE: This explanation is provided for informational purposes only and is not to be construed as or considered to be legal or tax advice. You should always consult your tax advisor with any and all questions regarding any all tax and tax-related matters, including any questions that you may have concerning tax strategies described generally above. Thrivent Advisor Network and its advisory persons do not provide legal, accounting, or tax advice. Consult your attorney or tax professional. Representatives have general knowledge of the Social Security tenets. For complete details on your situation, contact the Social Security Administration.

### **Advent Partners**

1400 Proline Place Ste 100 Gettysburg, PA 17325 214 Senate Ave Ste 100 Camp Hill, PA 17011  
[ap@adventpartnersfp.com](mailto:ap@adventpartnersfp.com) | (717) 334-5451 | [www.adventpartnersfp.com](http://www.adventpartnersfp.com)